



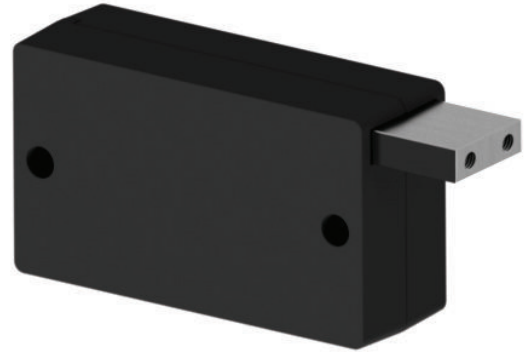
**CAMLOCK**  
SYSTEMS

**PRODUCT SPECIFICATION**

Series 700

# SERIES 700

## VERSATILE ACTUATOR



## OVERVIEW

The Series 700 is a locking solution for space-sensitive applications. Designed specifically for interfacing with legacy equipment and existing mechanical locking systems, the Series 700 ensures seamless integration even in the most confined space.

Auto relock on door closing: with built in sensors, the bolt only engages when the fridge closes, providing zero resistance in door closing.

Versatile Mounting: Infinitely mountable with robust monitoring capabilities, it provides powerful actuation for both pushing and pulling mechanisms.

Adaptable Locking Bar: The innovative tap locking bar easily adapts to existing locking mechanisms without the need for extensive tooling, ensuring a hassle-free installation process.

## TECHNICAL DATA

|                                |  |
|--------------------------------|--|
| Voltage                        | (5.5v 400mA) (12v 350mA) (24v 250mA) Voltage must be specified at ordering   |
| Trigger                        | Positive and negative triggers   |
| Material                       | Plastic body with ZAMAC locking  |
| Finish                         | Light bead blasted plastic   |
| Cycle Tested                   | 100,000 cycles   |
| Mechanical Override            | Yes - Fitted on locking bar<br>Compatible accessories available upon request |
| CIPS Camlock Intelligent power | Available on 12v and 24v models  |
| Bolt force                     | 150g of lifting force.   |
| Fixing                         | 2 x 4mm fixings  |
| CE & UKCA                      | TBA  |
| Available modes                | Latch and deadbolt and auto relock slam available                            |
| Cable                          | 1 m cable fitted as standard, other options available on request             |

**SMARTER  
LOCKING**



**TECHNICAL DRAWINGS**

